

Presentation outline

- Template data
- Health service plans to enhance sub-acute pathway
- Outcome measures
- Indicators



Elective orthopaedic templates

Thankyou!



Conservative therapy via SACS or VACS

- Low % clients through pathway
- Limited data on length of stay
- Criteria
 - SACS eligibility criteria
 - SACS vs VACS



Conservative therapy via SACS or VACS continued

- Barriers:
 - SACS model of care
 - Short time frame between clinic and surgery (+ve)
 - Lack of awareness of SACS
- Enablers:
 - 'Prehab' group models
 - Policy and procedures



Referral to SACS preoperatively

- Limited data available on % of clients through this pathway
- No data on length of stay
- Criteria
 - Safe home environment
 - Medical management post operatively



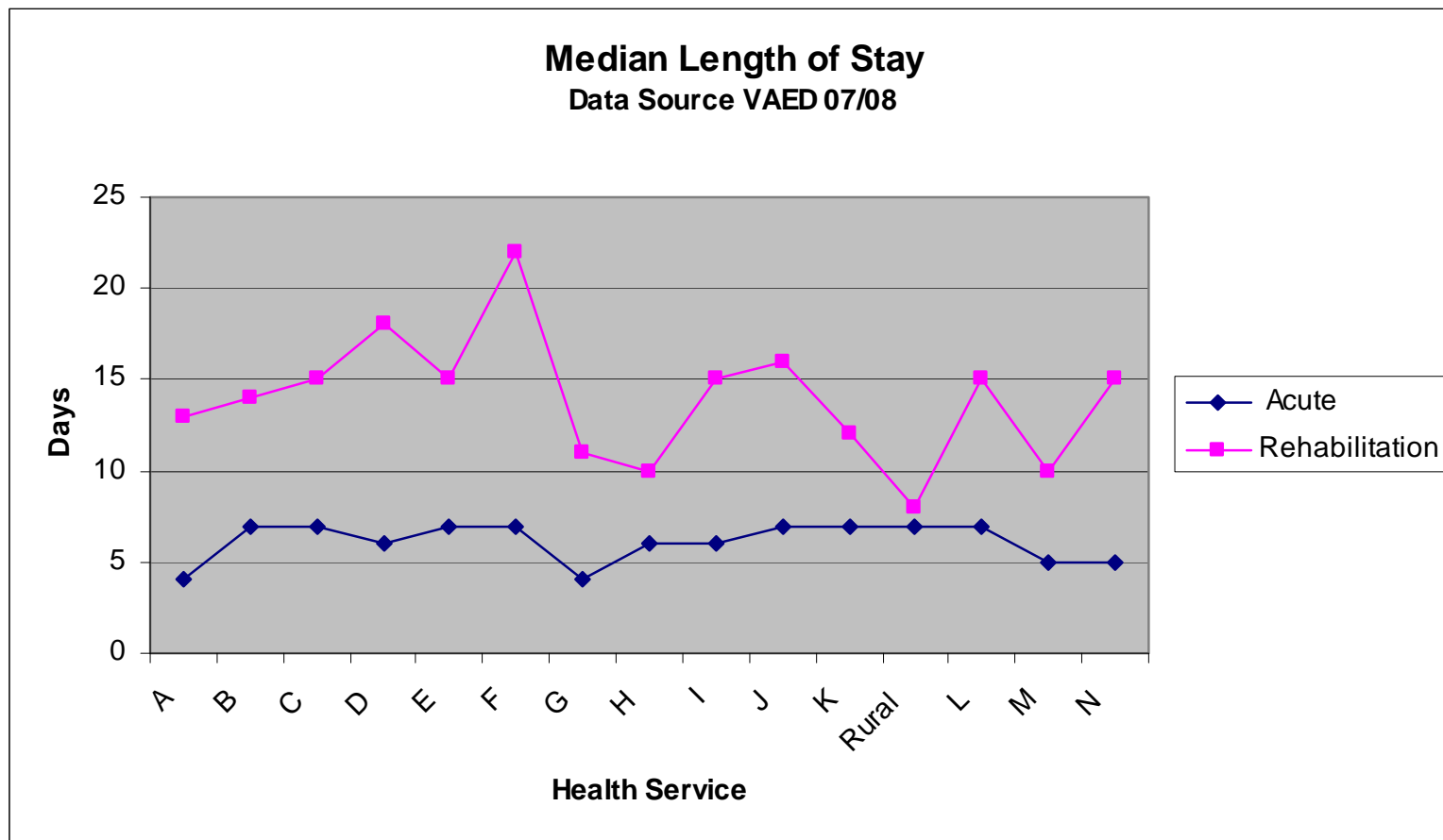
Referral to SACS preoperatively continued

- Barriers
 - Home set-up
 - Processes promote PAC allied health
 - Different surgical preferences
- Enablers
 - Improve screening at pre-admission clinic – better utilisation of resources
 - Risk Assessment Prediction Tool



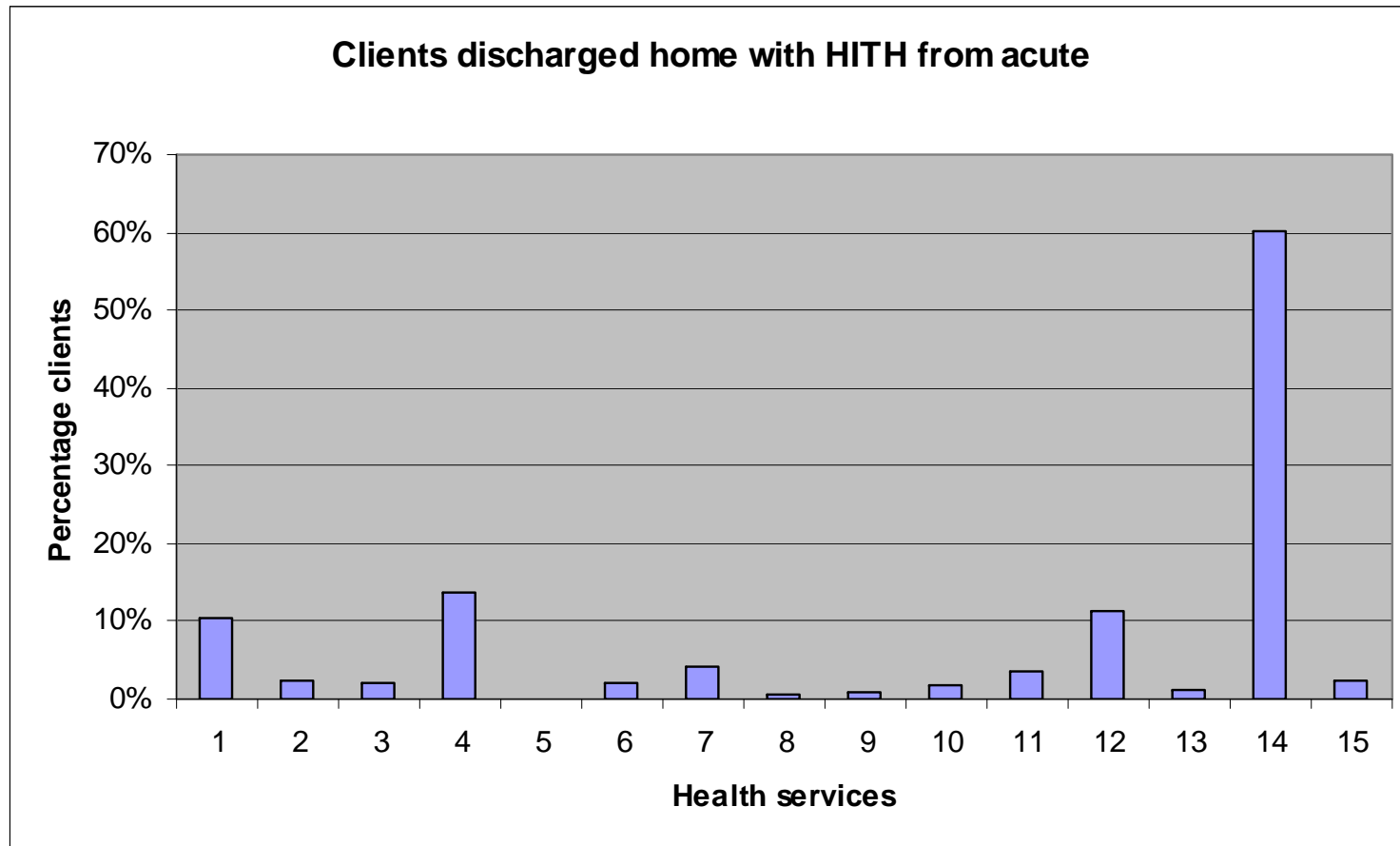
Acute and sub-acute length of stay

Total knee replacement



Acute to Hospital in the Home

Total hip replacement



Home-based rehabilitation pathway

Total hip replacement

- Barriers

-

- Enablers

- Preadmission flag
- OT assessment prior to surgery
- Review use PAC allied health
- Clear criteria



Additional pathways

- Discharge:
 - sub-acute to HITH
 - HITH to SACS (home/centre)
 - sub-acute to SACS (home/centre)
- External health service pathways



What the data tells us...

- Opportunities to improve continuity of care



Indicators

- Change to length of stay
- Patient satisfaction
- Referrals to SACS
 - Pre operative
 - Home based rehabilitation
 - Timeliness of intervention



Afternoon Workshop

Focus on issues and opportunities to enhance the role of sub-acute services with elective orthopaedic patients

