

Elective Orthopaedic Pathways in Southern Health and Rehab in the Home

Update



integrity • compassion • accountability • respect • excellence

Southern Health

Better Health for Our Community

Elective Orthopaedic Pathways

- Acute Sites in Southern Health as referrers of people post elective surgical intervention
 - Moorabbin
 - Dandenong
- Nb Sandringham Hospital

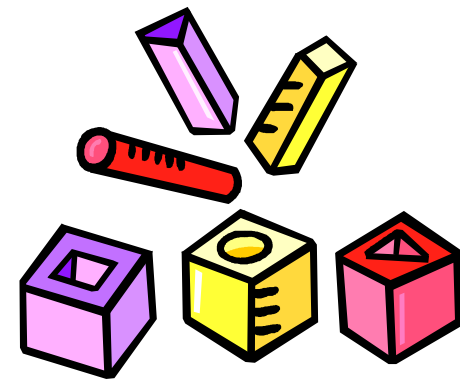
Elective Orthopaedic Pathways

- Community Rehabilitation
 - Geography
- Home Based
 - Cheltenham
 - Cranbourne
- Centre Based
 - Parkdale
 - Clayton
 - Springvale
 - Dandenong
 - Cranbourne
 - Pakenham



Elective Orthopaedic Pathways

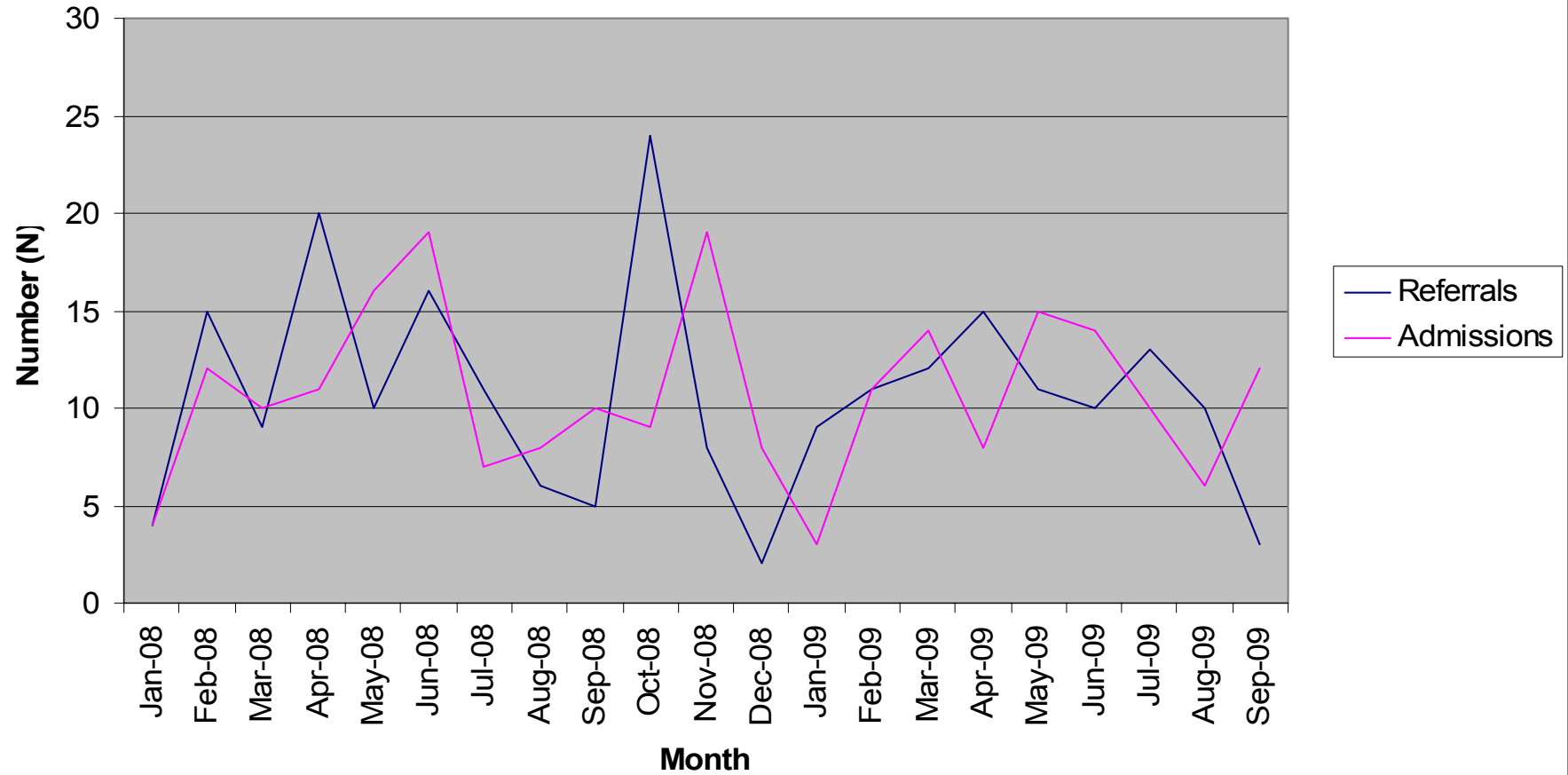
- Home based service (RITH)
 - developed 1996 with a case management model
 - incorporated access to brokerage funds as well as directly employed clinicians
 - nursing care, home care, personal
- Centre based services
 - traditional staffing profiles
 - recruitment challenges
 - care
- Strong links between services however the teams have traditionally operated as discrete clinical teams



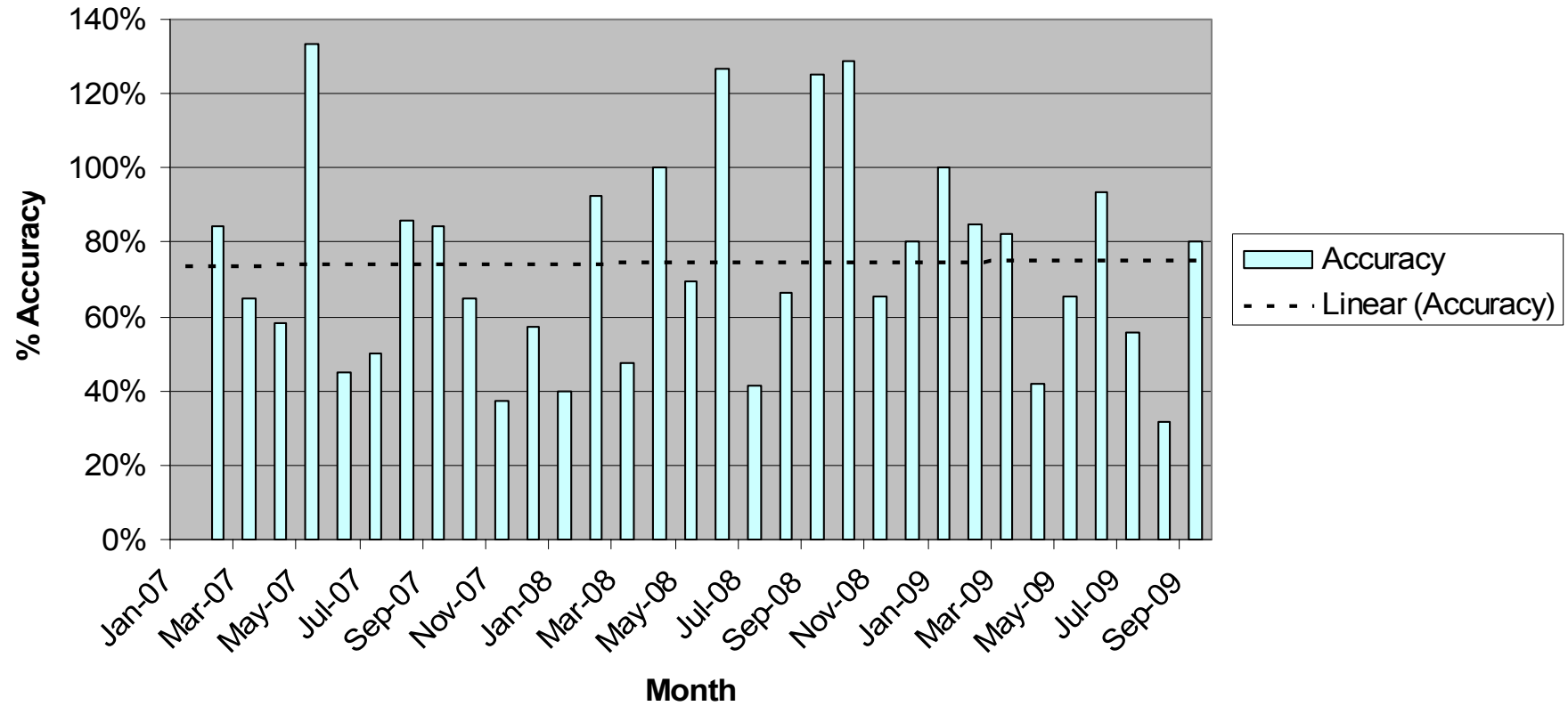
Elective Orthopaedic Pathways

- Things to work on for the future
 - Pre Admission process
 - Standardising
 - SACS with a presence
 - Marketing
 - Responsiveness and capacity
 - Physical space in centre based services
 - Recruitment

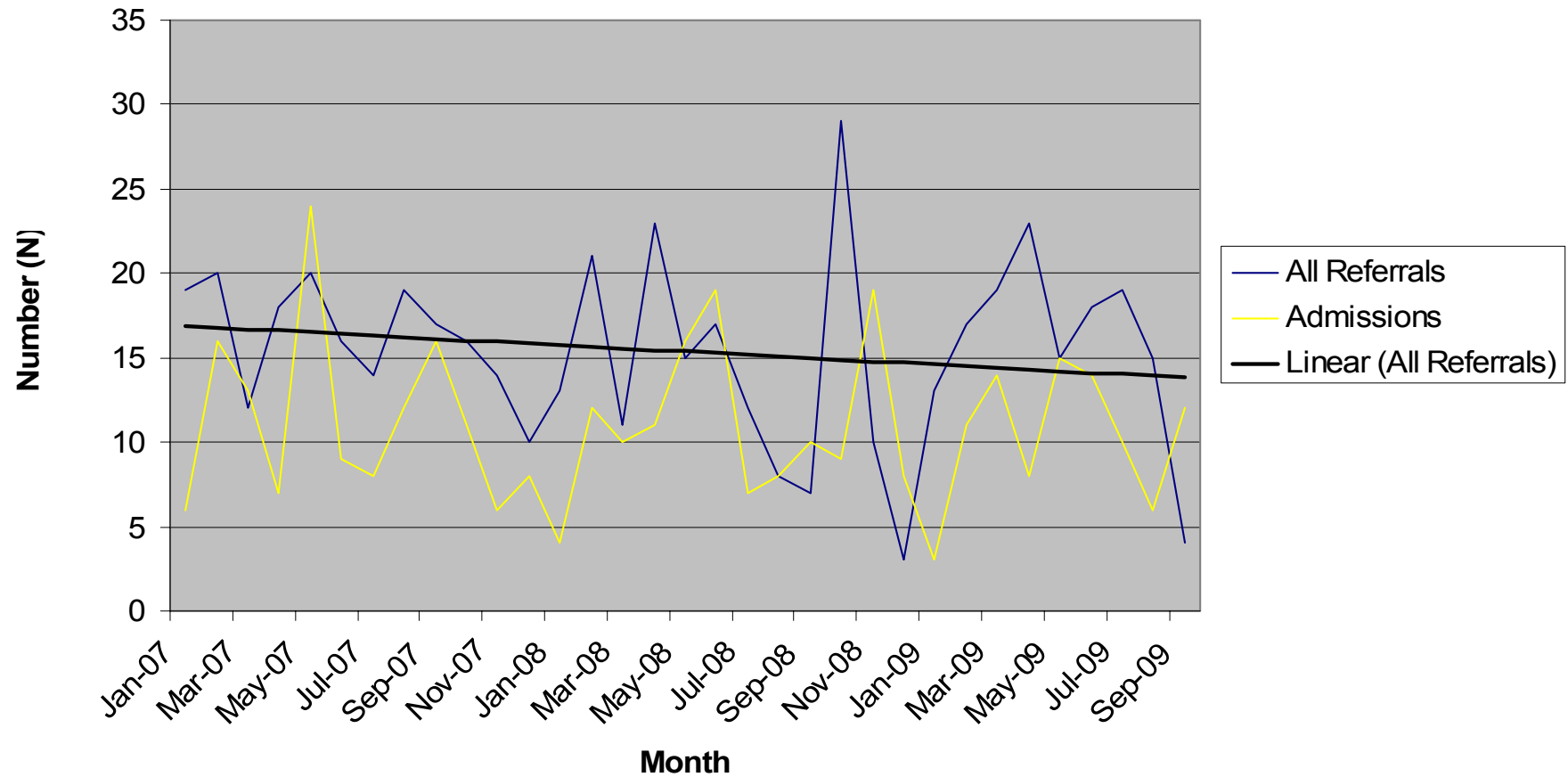
Hip and Knee Replacement RITH Referrals and Admissions 2008-09



Accuracy in Prediction



Hip and Knee Replacement RITH Referrals and Admissions 2007-09



Hip and Knee Replacement RITH Referrals and Admissions 2009

