

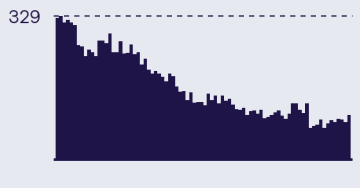
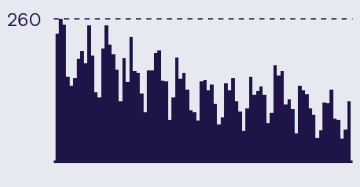
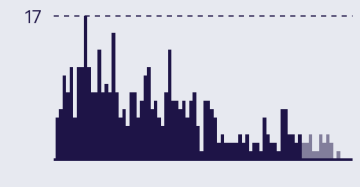

# Victorian COVID-19 Surveillance Report

06 September 2024

**OFFICIAL**

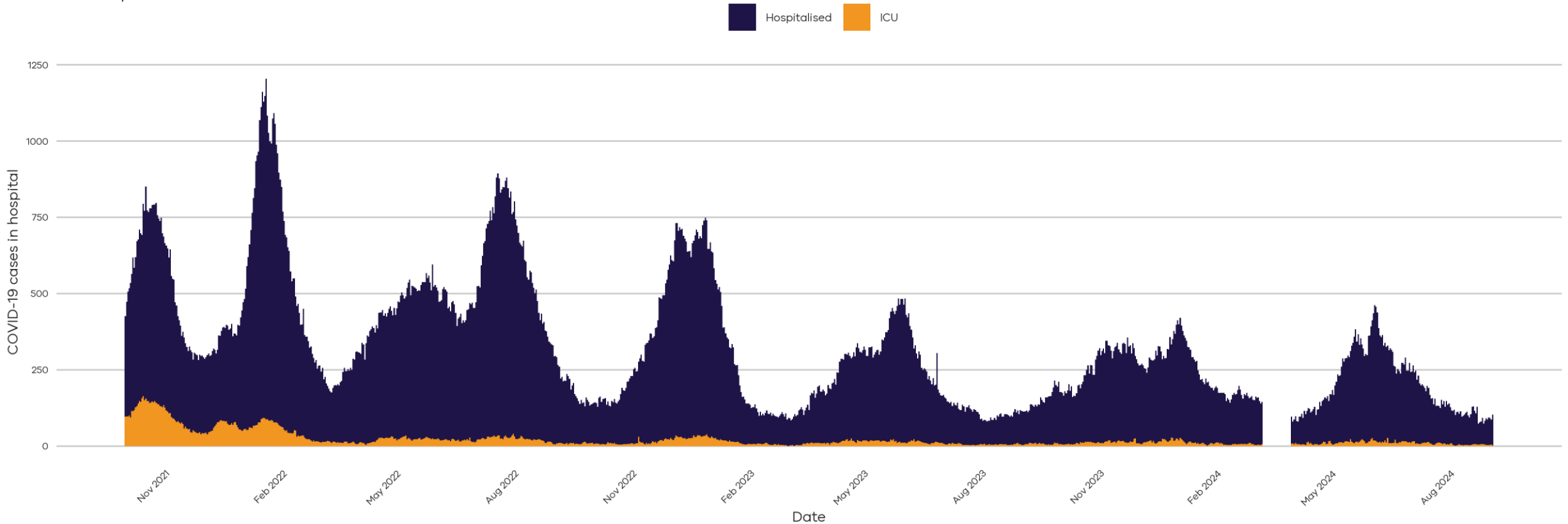
# Epidemiological Summary

## Current indicators show low levels of COVID-19 activity in Victoria.

<p>Daily counts last 12 weeks</p>	
	<p><b>The number of people in hospital with COVID-19 has remained stable this week.</b> The 7-day average is 91 (week ending 03 September), compared to 90 last week.</p> <p><b>The 7-day average of ICU patients has decreased this week (6 to 4).</b></p>
	<p><b>COVID-19 notifications decreased this week.</b> A total of 605 cases (PCR-confirmed) were notified in the most recent week (ending 03 September), compared to 646 the week prior.</p> <p>18,211 PCR tests were completed last week, a decline from the week prior with 19,610 tests.</p> <p>3.7% of tests returned a positive SARS-CoV-2 result, a slight increase from 3.6% the previous week.</p>
	<p><b>Deaths have declined.</b> In the most recent 28-day period (24 Jul 2024 - 20 Aug 2024) there were 88 COVID-19 associated deaths. Increases and decreases in the reporting of deaths attributable to COVID-19 tend to lag waves of infections and hospitalisations by several weeks.</p>
	<p><b>Globally, JN.1 is the most prevalent variant.</b> JN.1 sublineages <b>KP.3</b> and <b>KP.2</b> have slightly declined in prevalence whilst <b>KP.3.1.1</b> and <b>LB.1</b> have increased. These are all declared Variants Under Monitoring by WHO.</p> <p><b>KP.3</b> is the most prevalent JN.1 sublineage in Australia. Recently, <b>KP.3.1.1</b> has increased in abundance.</p>

# COVID-19 Hospitalisations

Daily COVID-19 cases in hospital and ICU  
Data until 03 September 2024

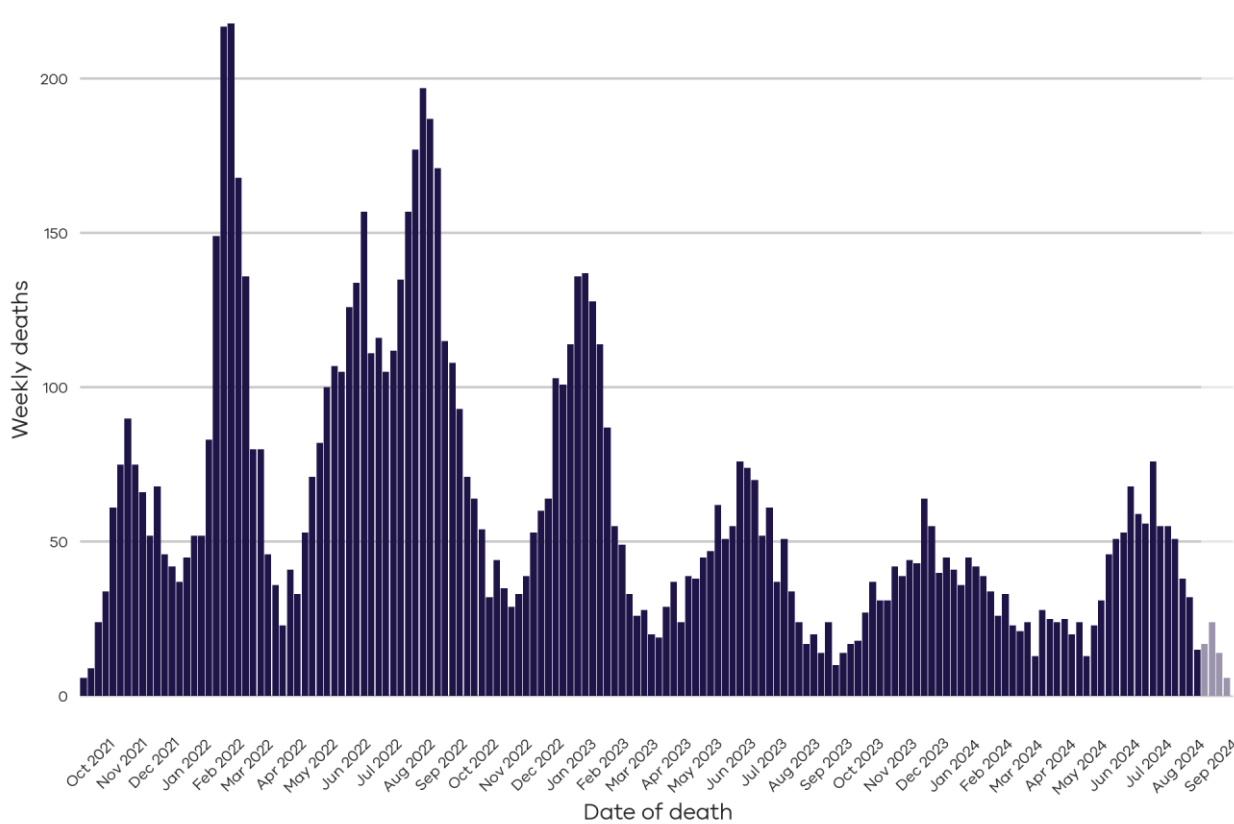


Data source: Critical Health Resource Information System (CHRIS)

This graph shows data back to September 2021 when hospitalisations were increasing during the Delta variant wave. Hospitalisations represent the number of COVID-19 positive patients in hospital on a given day. Please note that COVID-19 hospitalisation data from CHRIS is unavailable for dates between 8 March 2024 and 30 March 2024

# COVID-19 Mortality

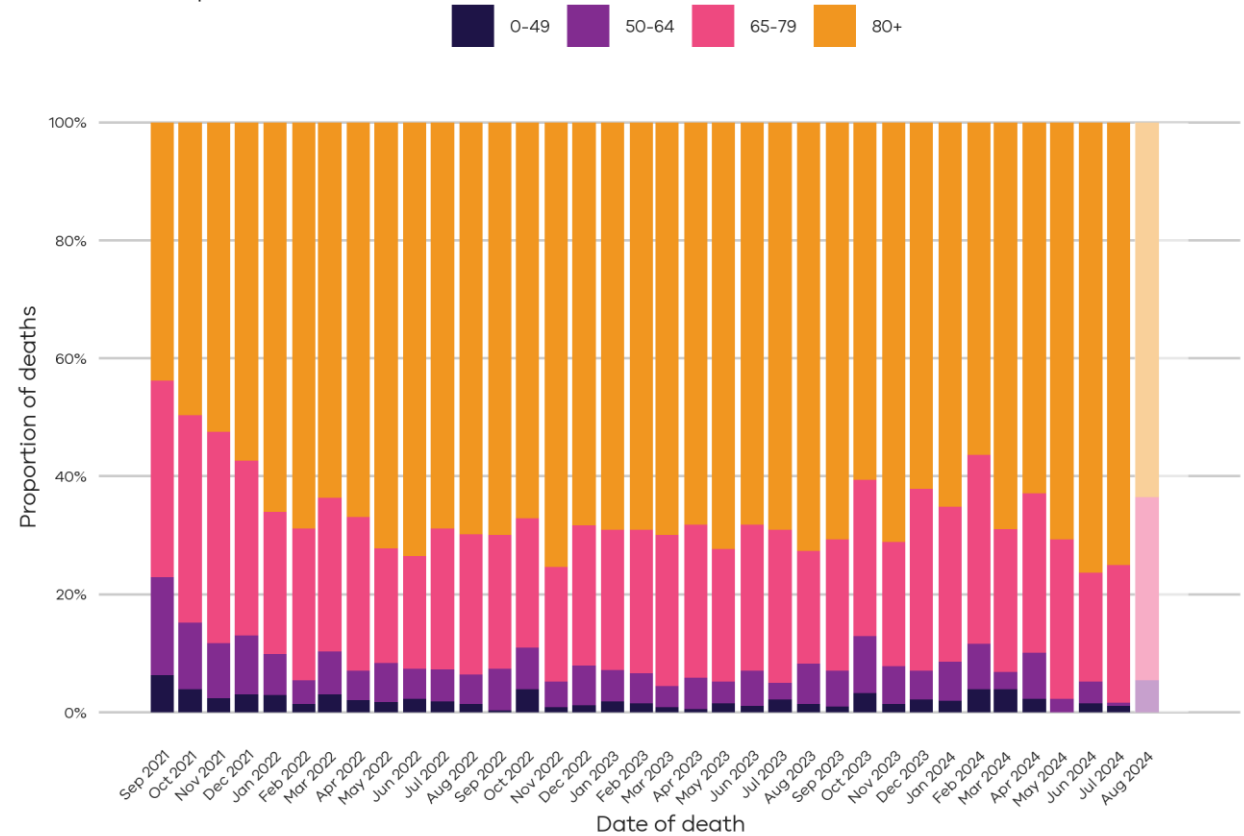
**Weekly COVID-19 deaths**  
Data until 03 September 2024



Data source: TREVI

Note: Faded area includes last 4 weeks where data is incomplete

**COVID-19 deaths by age**  
Data until 03 September 2024



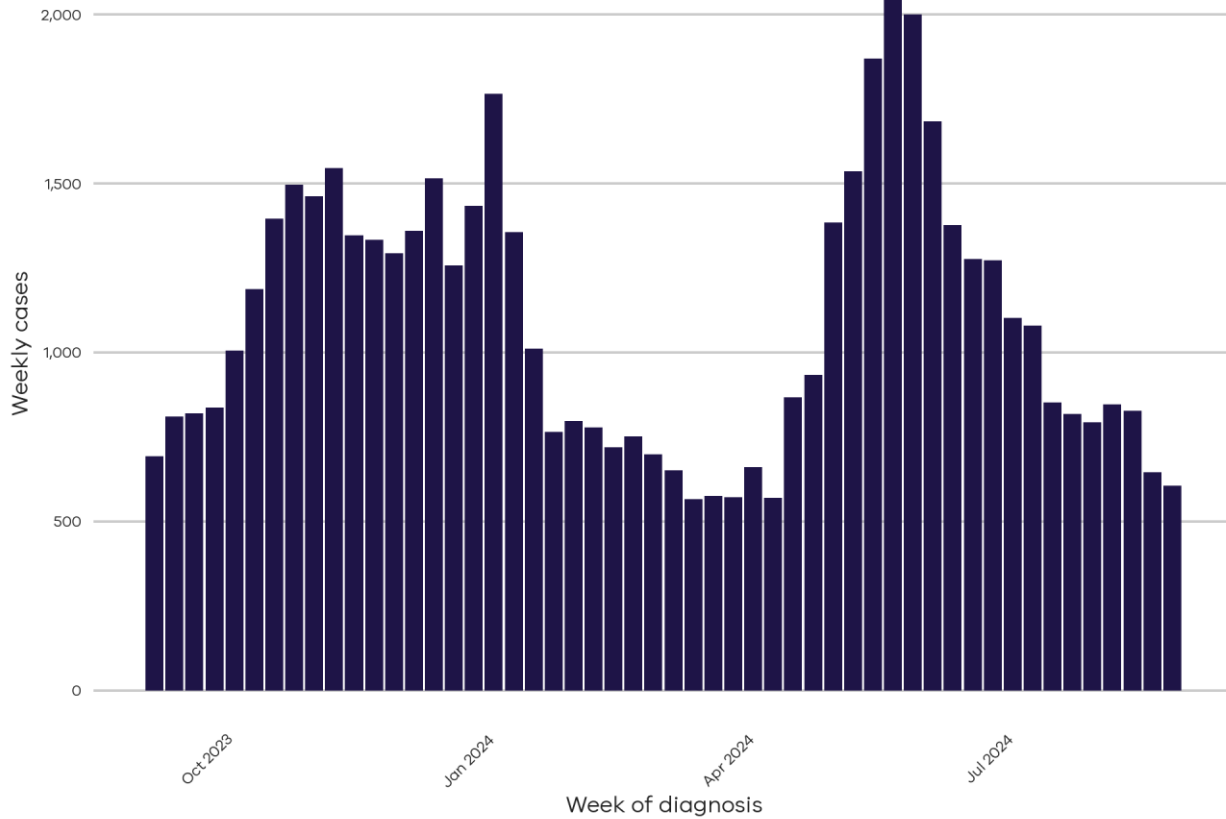
Data source: TREVI

Note: Faded area includes last 4 weeks where data is incomplete

Date is based on date of death, not the date of when each death was reported.

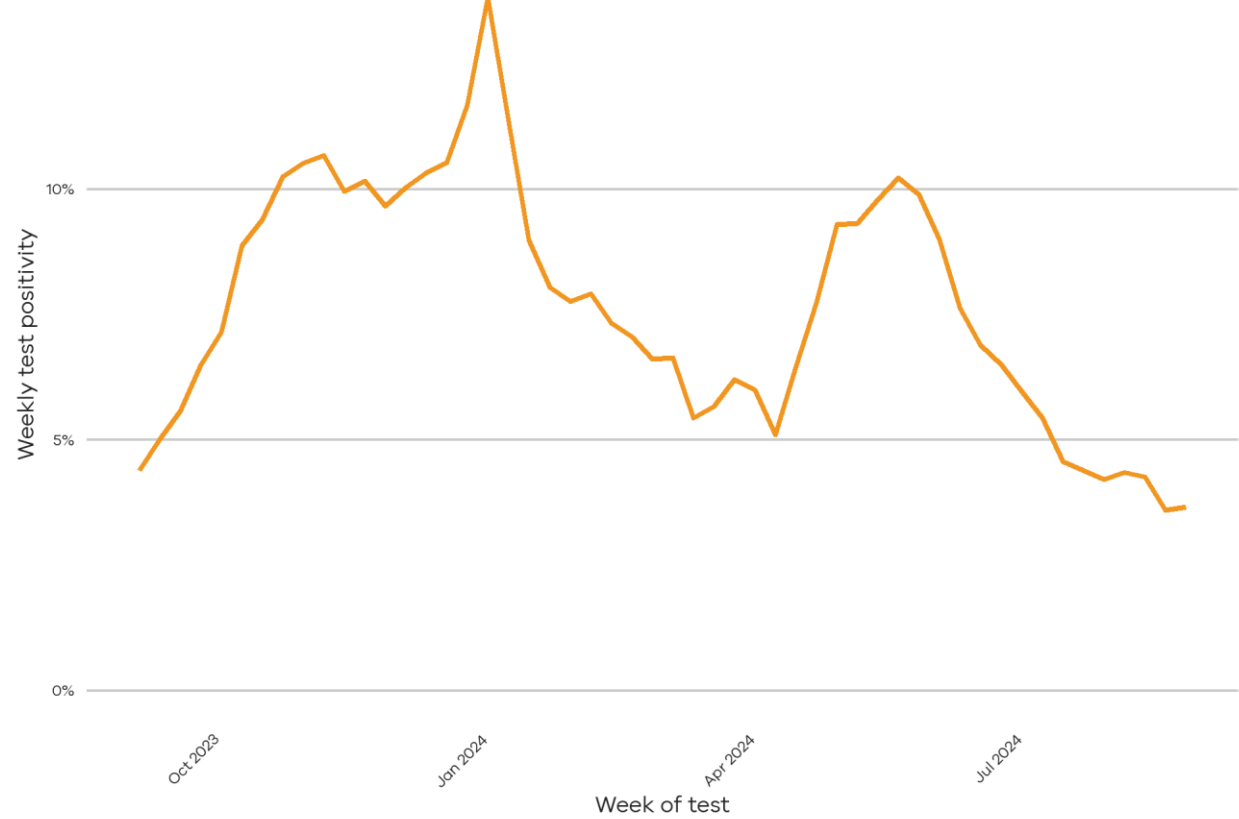
# COVID-19 Cases and Testing

**COVID-19 notifications (PCR-confirmed) by week in the past year**  
Data until 03 September 2024



Data source: TREVI

**COVID-19 test positivity by week in the past year**  
Data until 03 September 2024



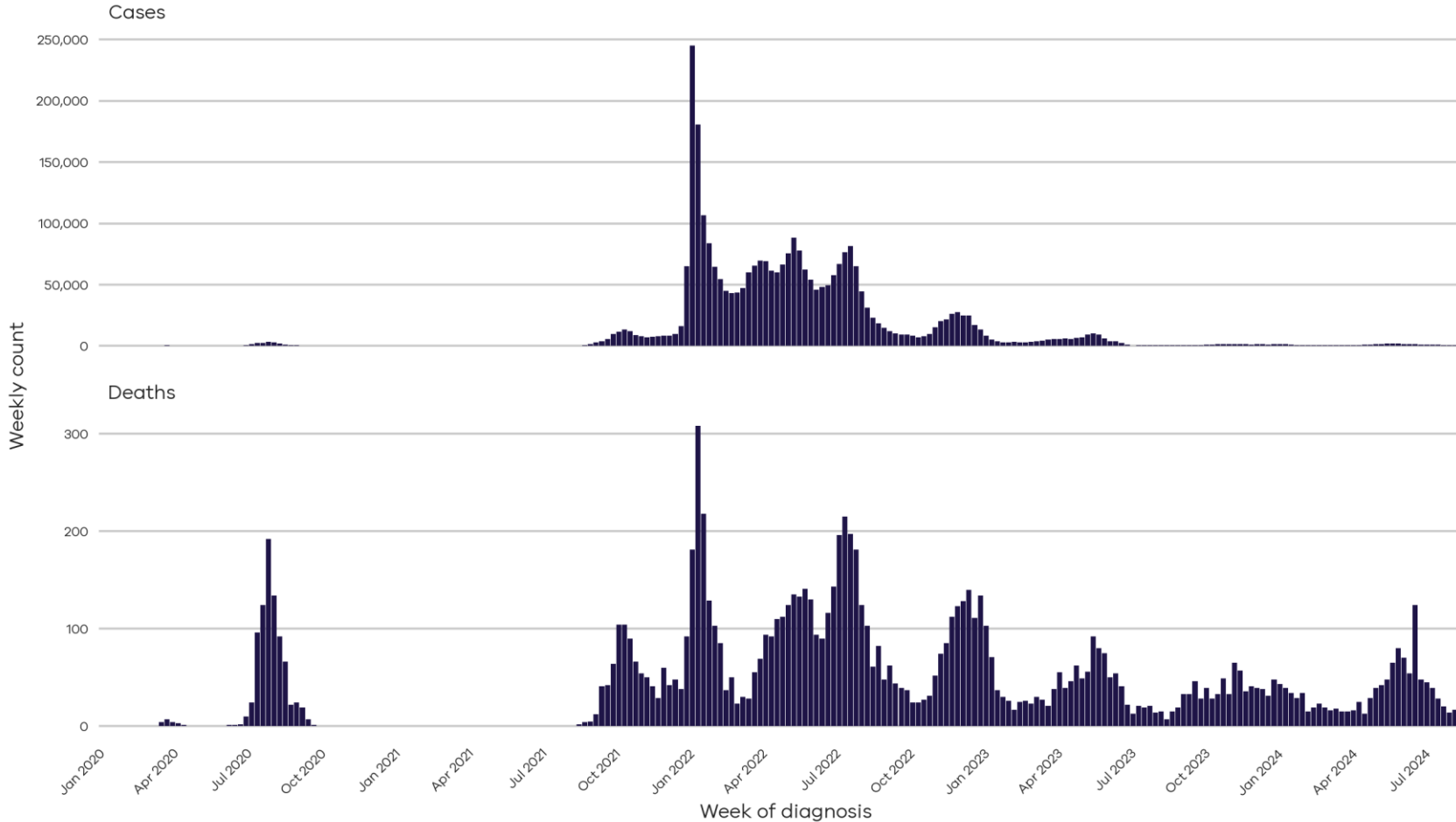
Data source: TREVI

Only confirmed notifications diagnosed by PCR are included. Rapid Antigen Test (RAT) results are no longer collected by the Department of Health.

# Appendix

# COVID-19 Historical Data & Definitions

**Epidemic curve of weekly COVID-19 metrics**  
Data until 03 September 2024



Data source: TREV

**OFFICIAL**

**COVID-19 Cases** are reported according to the definitions given in the Coronavirus (COVID-19) CDNA National Guidelines for Public Health Units. Where multiple positive test results are received for the same person within 35 days of the initial test result they are counted as a single case.

**As of 30 June 2023, probable cases are not collected by the Victorian Department of Health, case counts since this date reflect cases with a positive PCR test only.** Rapid Antigen Testing remains an important tool for individuals to access treatment and protect their community.

Changes in case numbers may be indicative of trends but they are a small subset of the total COVID-19 infections in Victoria.

**COVID-19 Hospitalisations** represent the number of active COVID-19 patients in hospital on a given day. This is reported by Victorian hospitals with an ICU to the Critical Health Resource Information Service (CHRIS) as daily aggregated data.

**COVID-19 Deaths** are counted according to the Victorian surveillance definition, including all deaths reported in the Victorian Deaths Index (VDI) with COVID-19 listed as a primary or contributing cause of death on the medical death certificate, or a death within 35 days of diagnosis, excluding clearly unrelated causes such as trauma. Deaths may be reported retrospectively as the time between death, submission of the data to VDI and linkage to case data may vary.

**Test positivity** is the percentage of SARS-CoV-2 tests with SARS-CoV-2 virus detected.