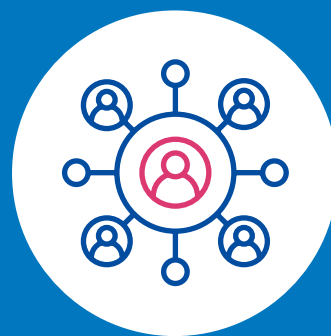


# Diabetes CONNECT

Delivered by healthAbility / EACH /  
Access Health and Community



## What is Diabetes Connect?

Diabetes Connect is a new program supporting people living with type 2 diabetes to manage their health and wellbeing. It is being delivered by select community health services across metropolitan and regional Victoria.

## What will I get from the program?

- You will work with a care coordinator to determine what supports and services you need to manage your health and wellbeing.
- Some of the services you might receive are:

### Allied health such as:

- Diabetes education
- Podiatry
- Dietetics
- Physiotherapy

### Community services such as:

- welfare, legal and housing support
- food relief
- social care services, including mental health, addiction, and disability support
- social supports that build community connection

- The care coordinator will help you to organise appointments and support you to build your knowledge and skills to manage your health and wellbeing after the program.
- The care coordinator will work closely with your General Practitioner who you will continue to see for clinical care.
- Services are available face-to-face or remotely through telehealth.

## Cost and duration

Diabetes Connect is a **free** program, with no cost to participants.\*

The program will run to June 2025, however the length of time you remain in the program will depend on your individual circumstances.

\* Diabetes Connect is being funded by the Commonwealth Government as part of the Primary Care Pilots initiative.

Deidentified information about your participation in the pilot will be shared with the Victorian Department of Health and the Commonwealth Government for monitoring and reporting purposes.

## To sign up and for further information

### Speak to your GP for a referral or contact

Health Service: healthAbility (for Banyule, Nillumbik and Whitehorse regions)

Phone: 03 9430 9100

Email: [intake@healthability.org.au](mailto:intake@healthability.org.au)

Website: <https://healthability.org.au>

Health Service: Access Health and Community  
(for Boroondara and Manningham regions)

Phone: 03 9810 3000

Email: [intake@accesshc.org.au](mailto:intake@accesshc.org.au)

Website: <https://accesshc.org.au>

Health Service: EACH (for Knox and Maroondah regions)

Phone: 1300 003 224

Email: [diabetesconnect@each.com.au](mailto:diabetesconnect@each.com.au)

Website: <https://each.com.au>

To receive this document in another format [email the Diabetes Connect project team](mailto:partnerships.primary@health.vic.gov.au) <partnerships.primary@health.vic.gov.au>.

Authorised and published by the Victorian Government, 1 Treasury Place, Melbourne.

© State of Victoria, Australia, Department of Health, October 2024.

ISBN/ISSN 978-1-76131-554-1 (online/PDF/Word) or (print)

Available at [Department of Health Integrated Care](https://www.health.vic.gov.au/primary-and-community-health/integrated-care) <<https://www.health.vic.gov.au/primary-and-community-health/integrated-care>>